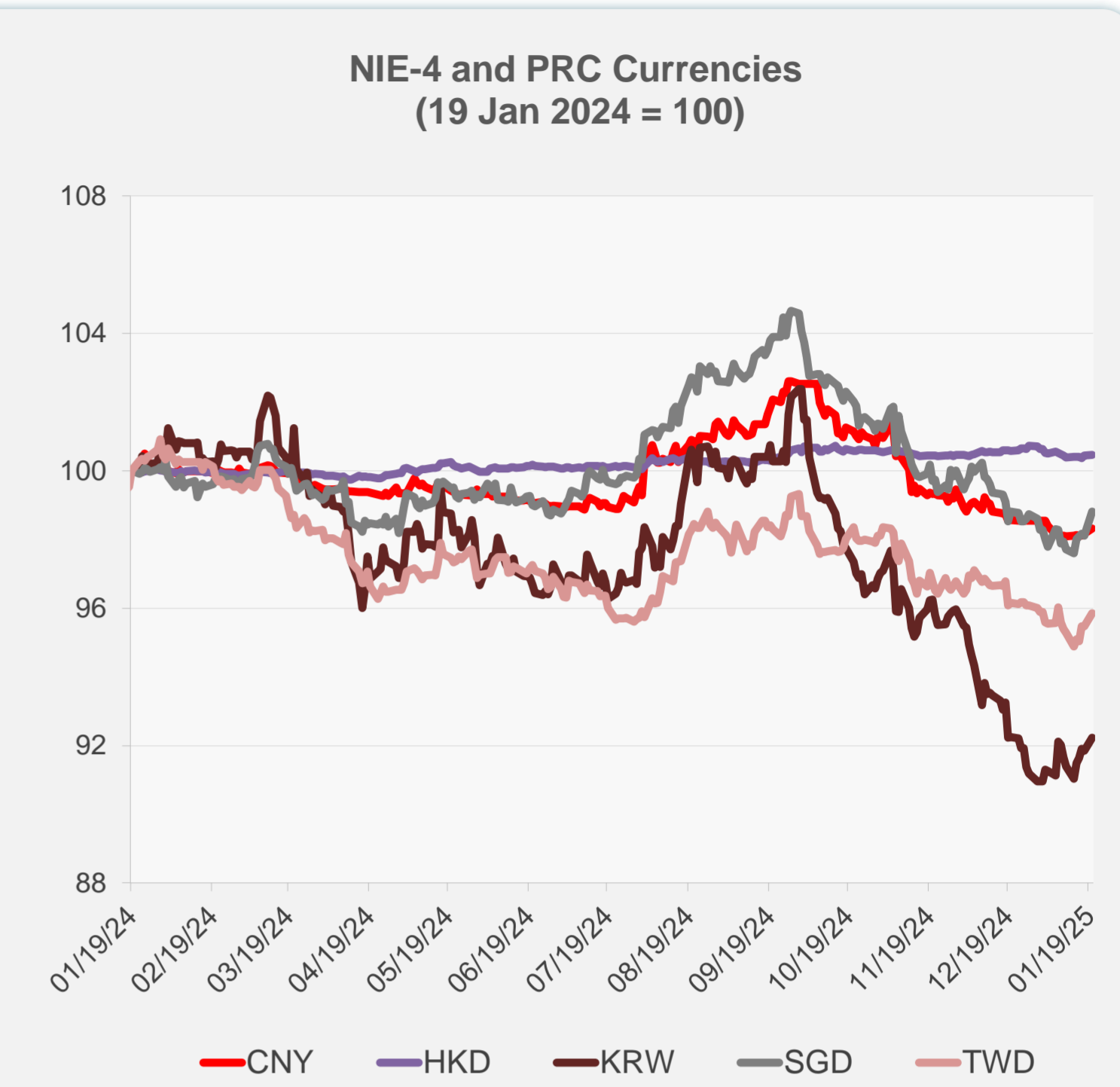
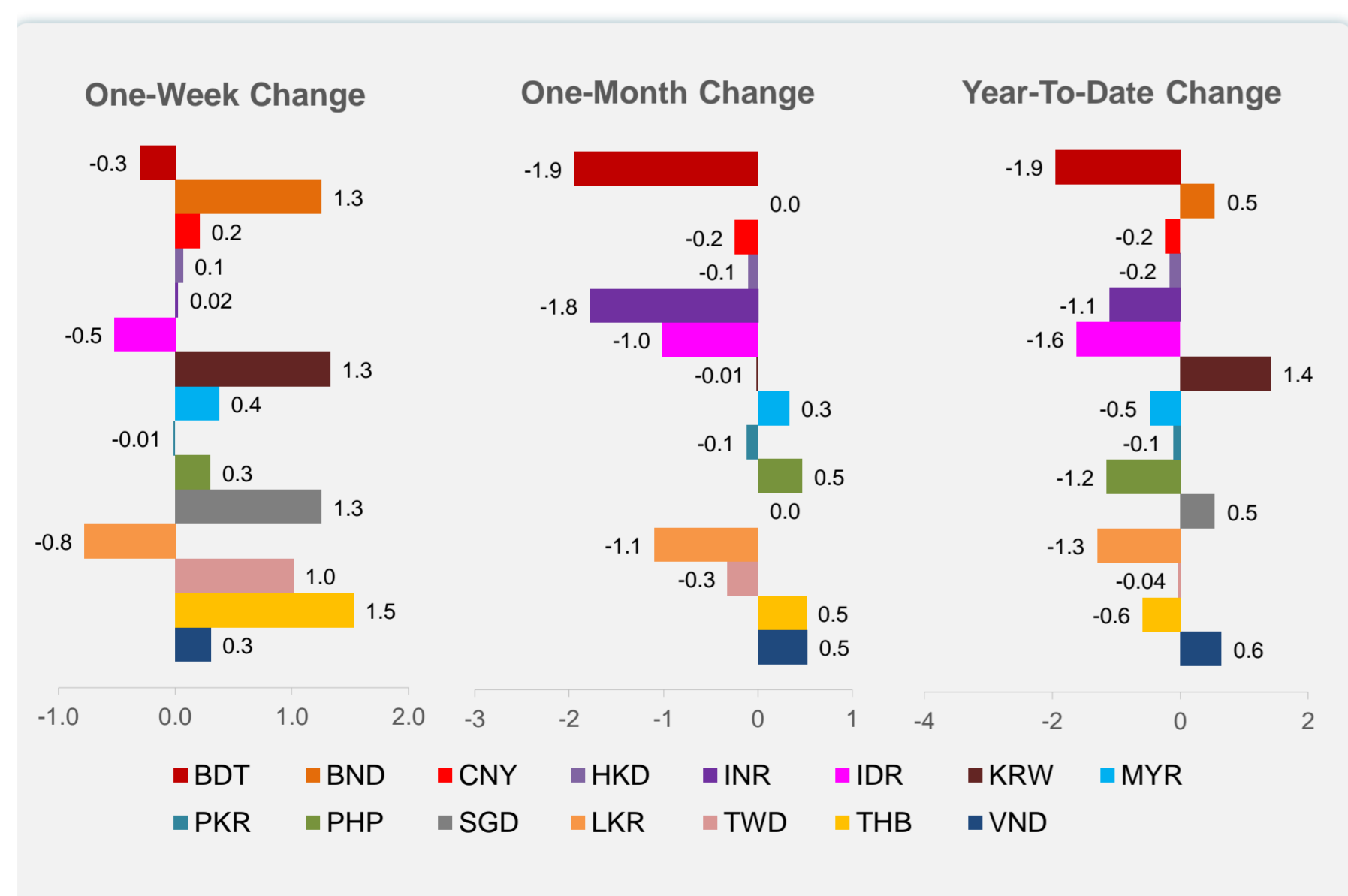
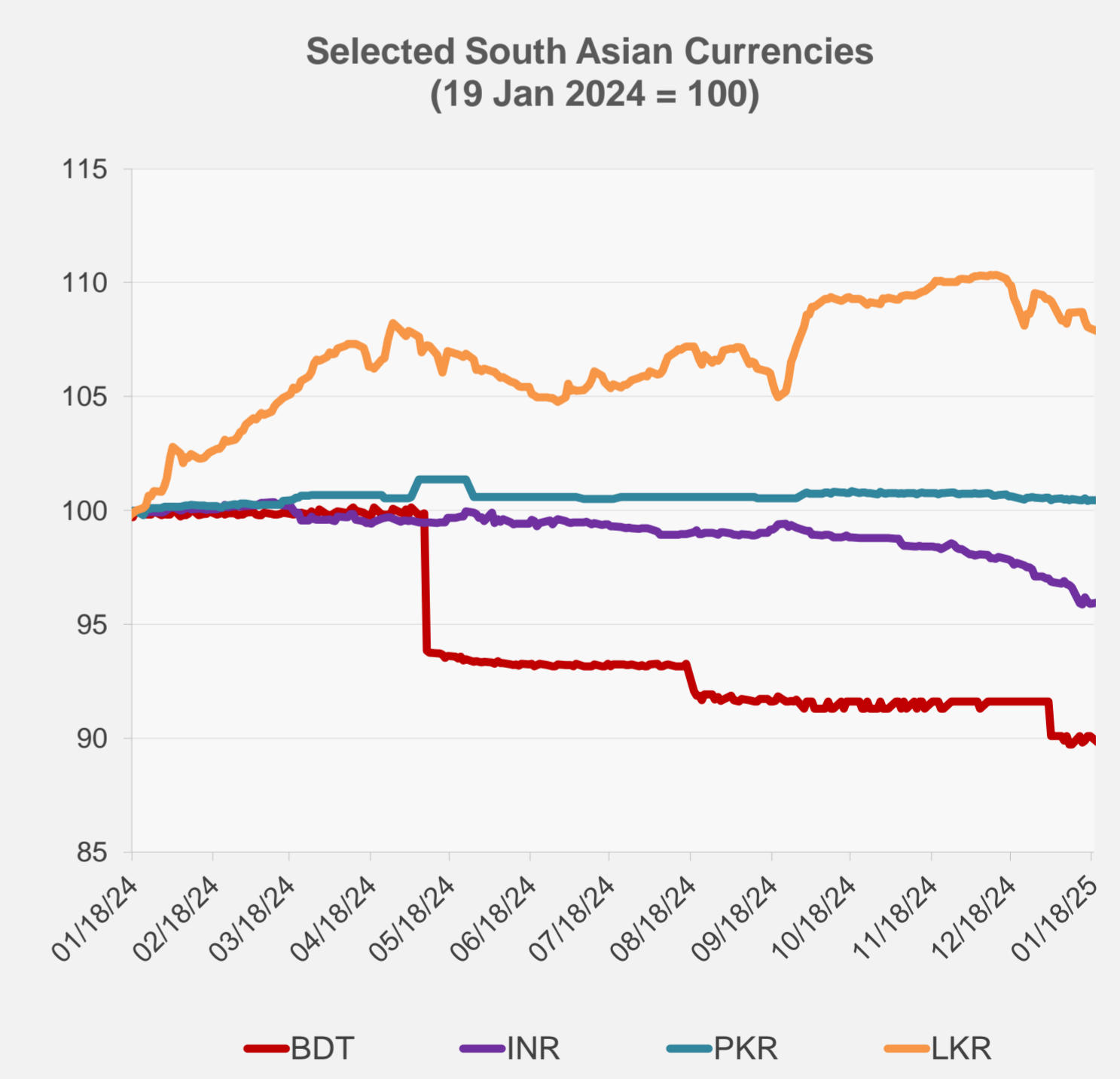
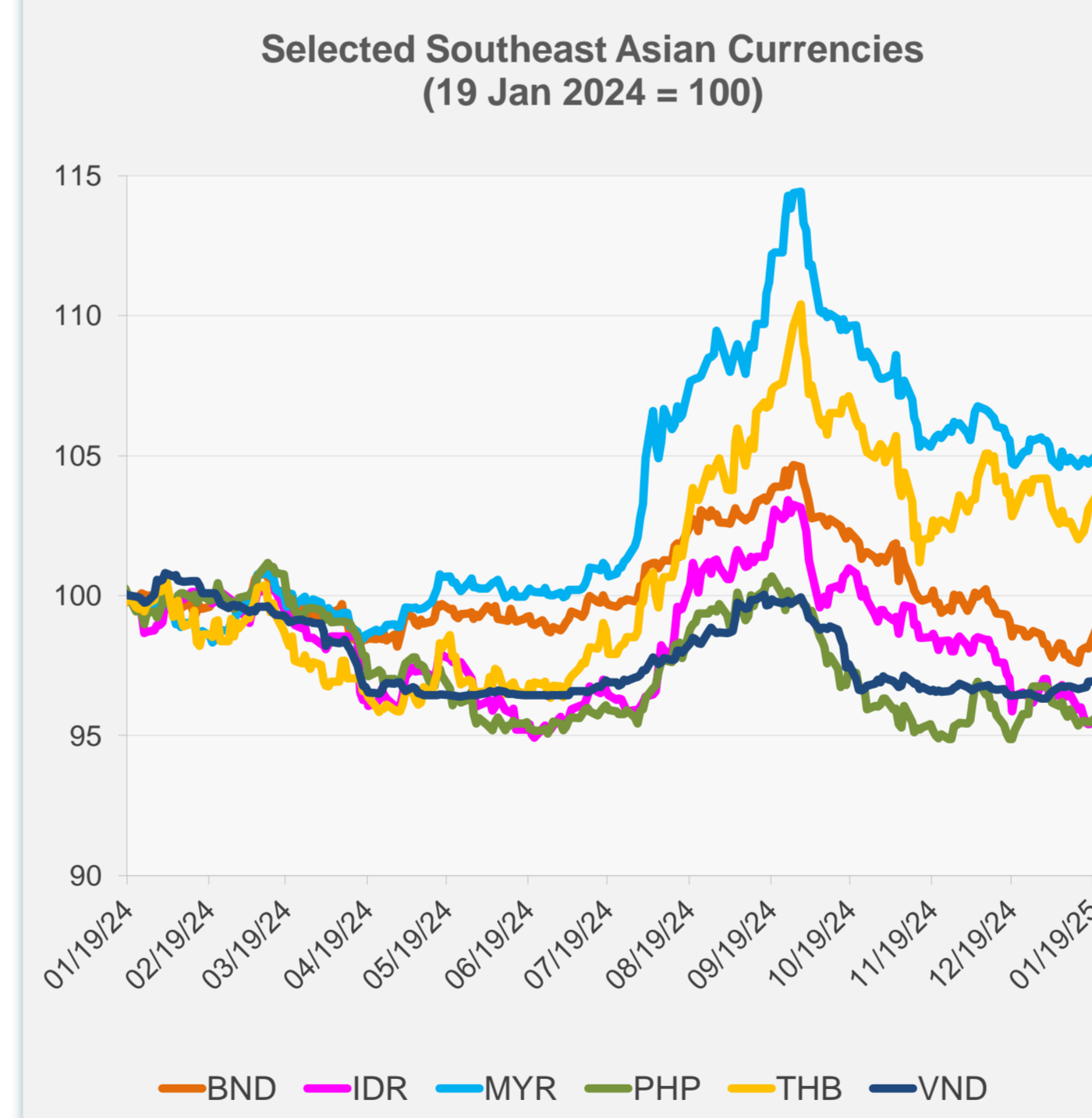


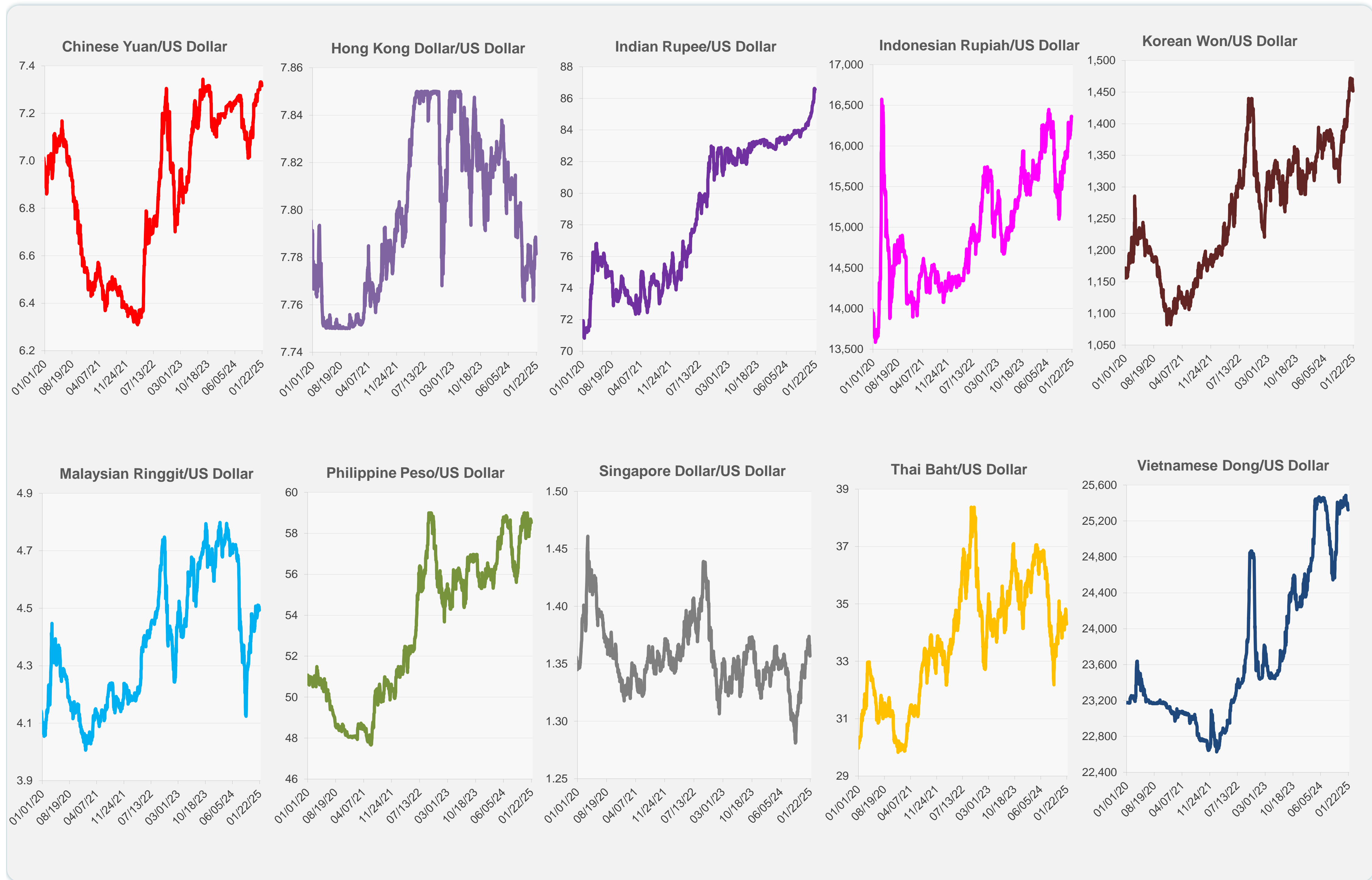
	Latest Closing	% change from Previous Day	% change from 01-Jan-25
Euro	0.96	0.97	0.44
Japanese yen (JPY)	155.69	0.28	0.95
Bangladeshi taka (BDT)	121.88	-0.31	-1.95
Brunei dollar (BND)	1.36	0.71	0.55
Chinese yuan (CNY)	7.32	0.17	-0.23
Hong Kong dollar (HKD)	7.78	0.03	-0.17
Indian rupee (INR)	86.57	0.05	-1.10
Indonesian rupiah (IDR)	16,360.00	0.03	-1.62
Korean won (KRW)	1,451.60	0.43	1.42
Malaysian ringgit (MYR)	4.49	0.29	-0.48
Pakistan rupee (PKR)	278.68	0.01	-0.11
Philippine peso (PHP)	58.52	0.21	-1.15
Singapore dollar (SGD)	1.36	0.71	0.55
Sri Lanka rupee (LKR)	296.85	-0.13	-1.30
Taipei,China NT dollar (TWD)	32.80	0.39	-0.04
Thai baht (THB)	34.30	0.50	-0.58
Vietnamese dong (VND)	25,322.50	0.02	0.64



NIE = Newly Industrialized Economies

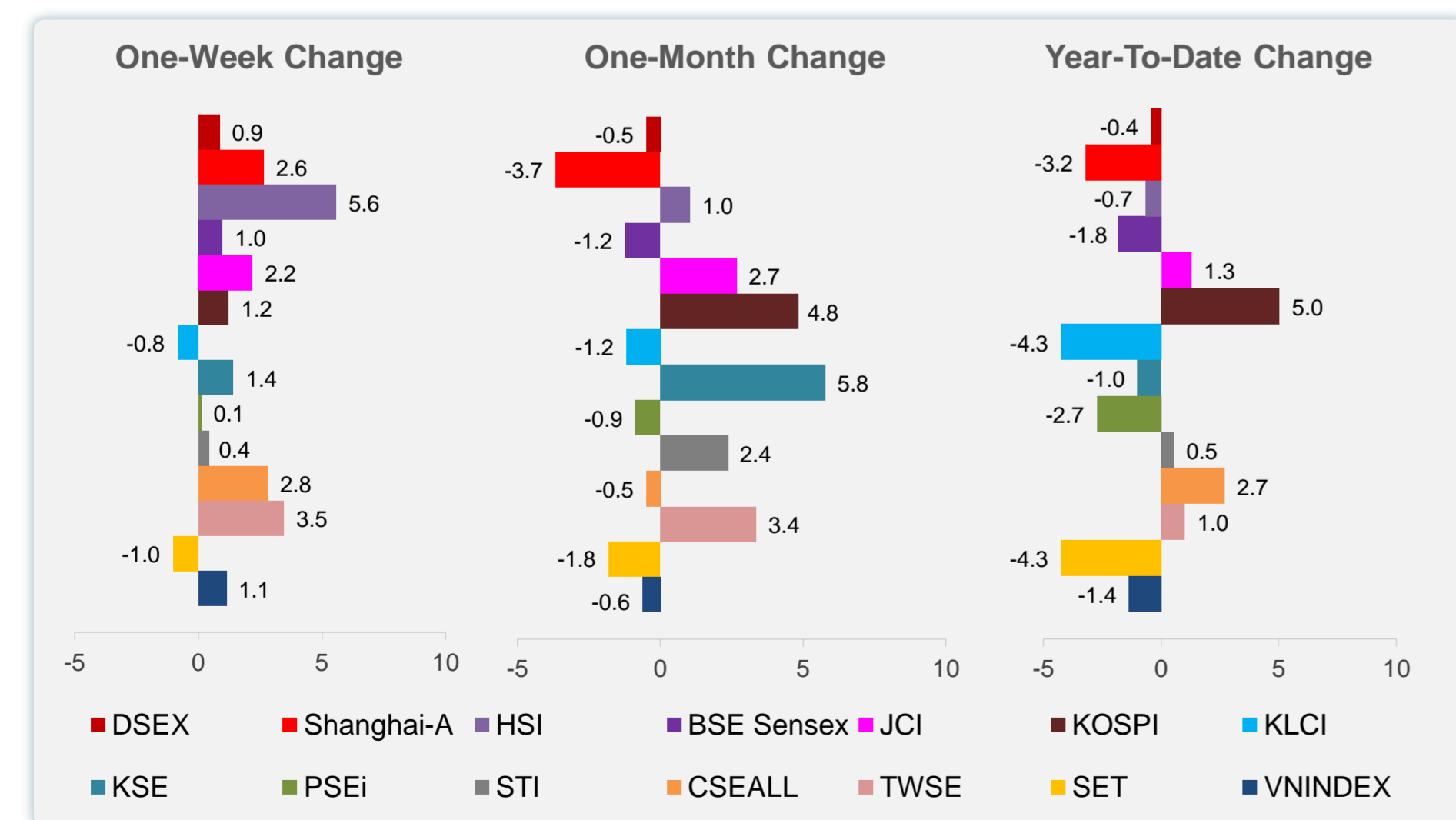
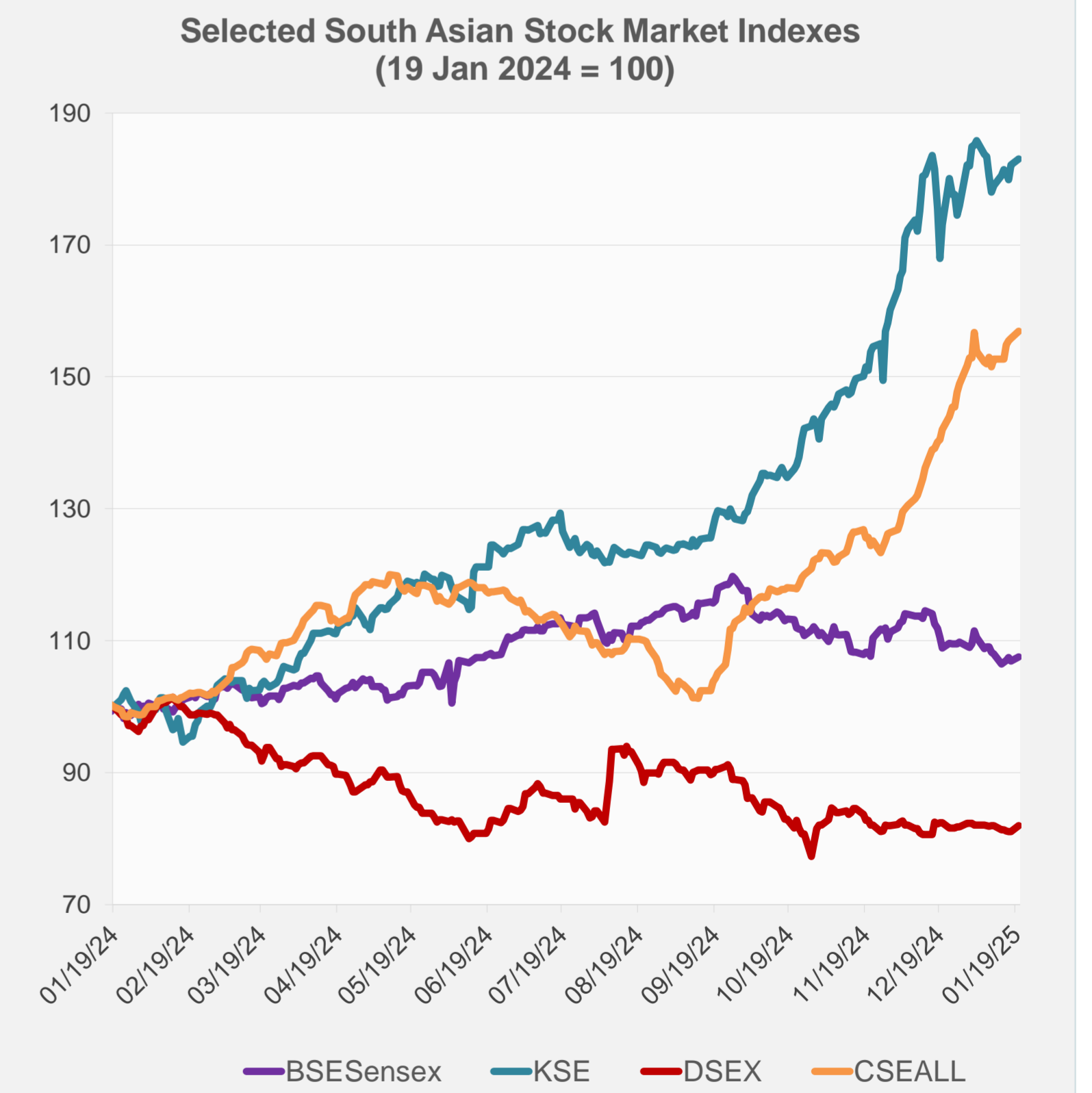
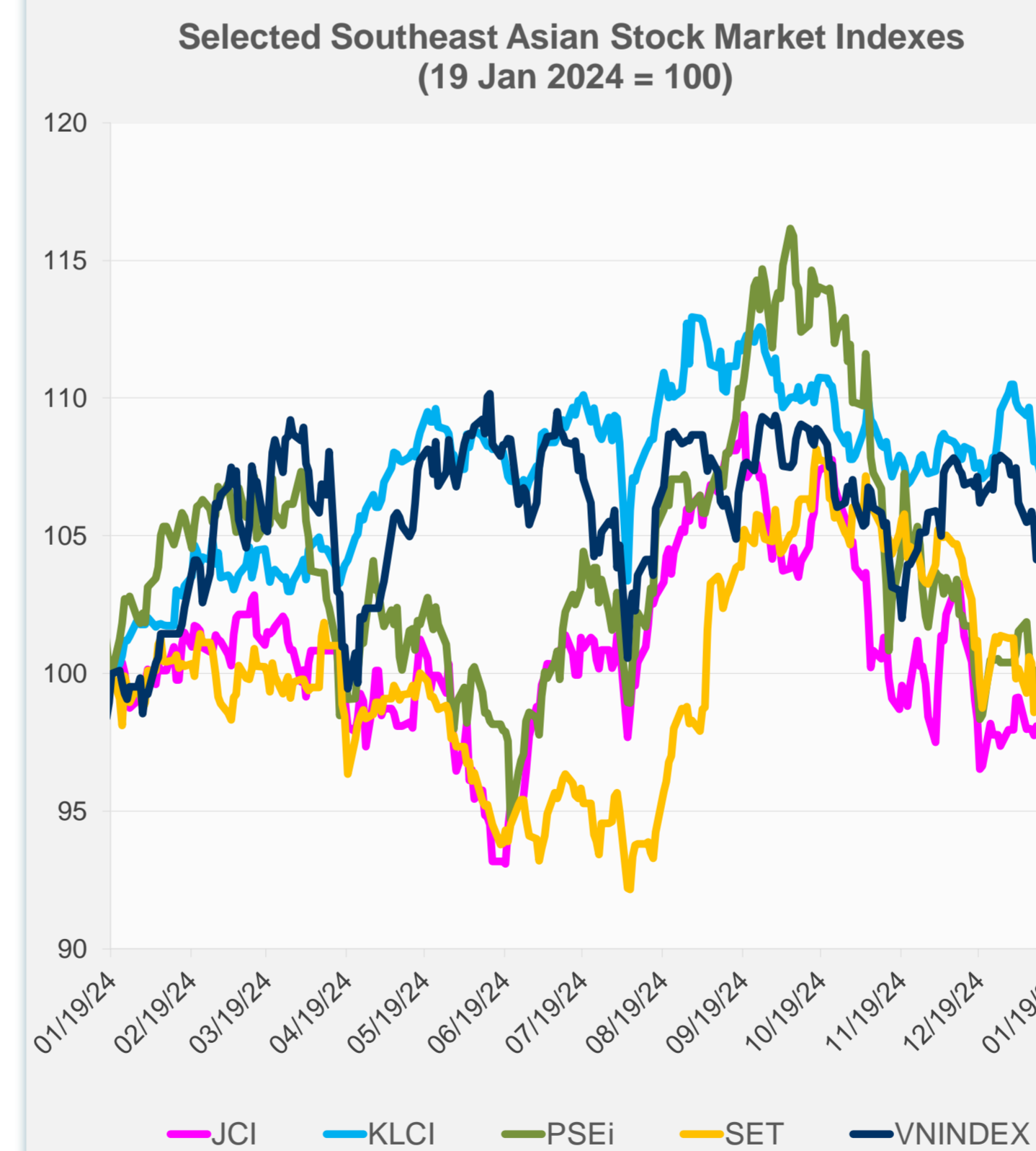
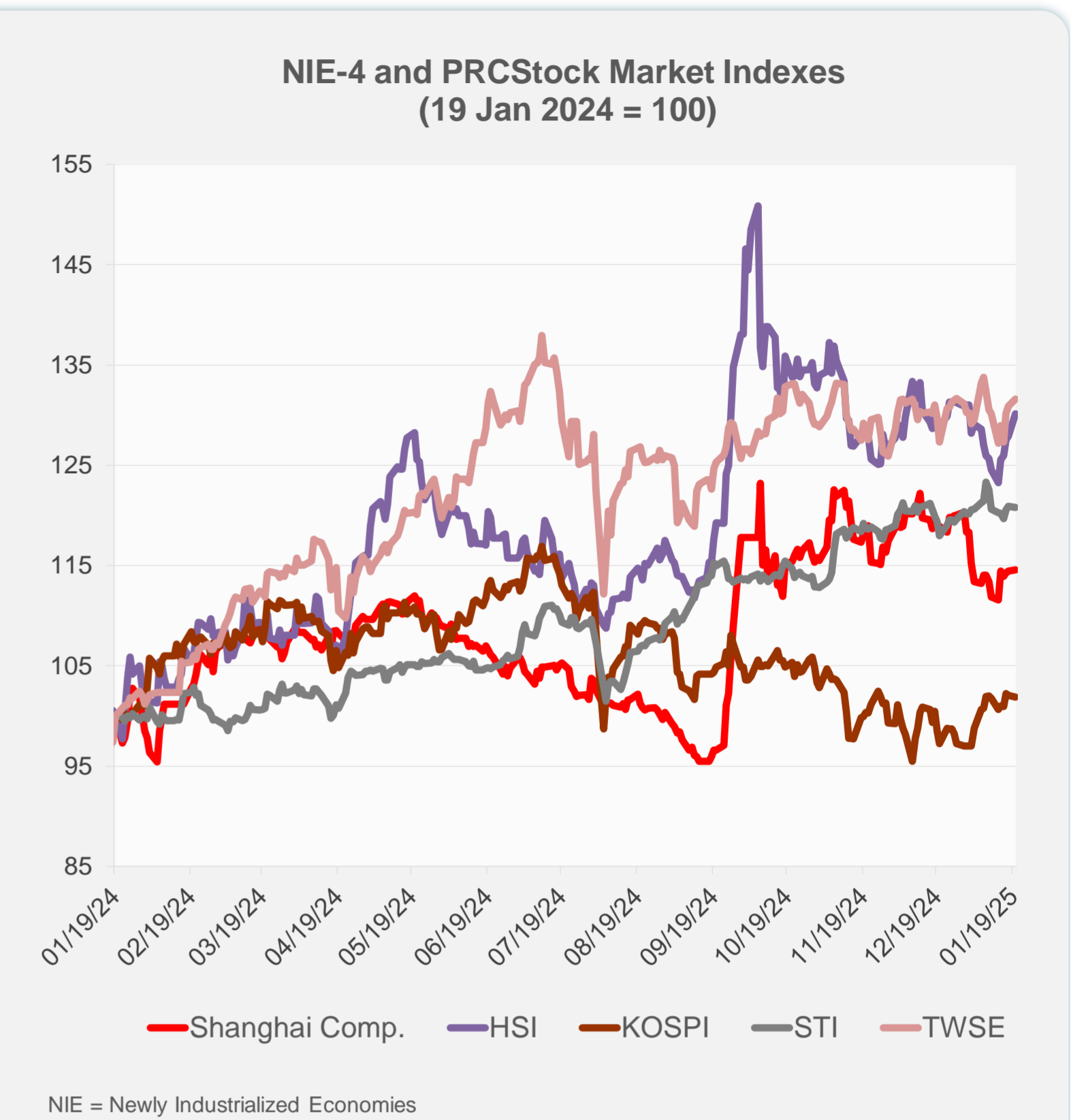
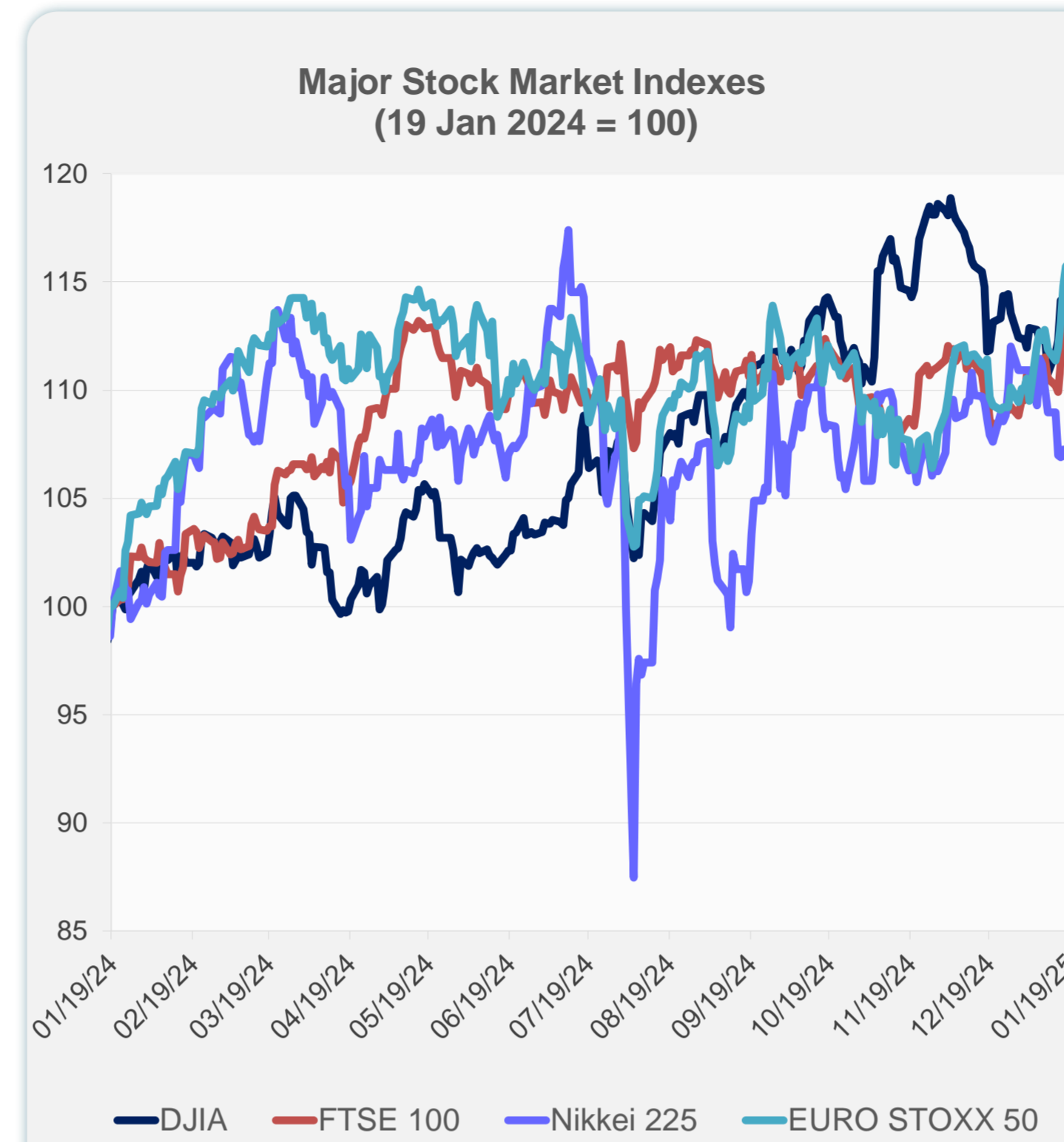


Note: Negative/Decreasing values indicate depreciation of local currency, and positive/increasing values indicate appreciation.
Source: ADB calculations using data from Haver Analytics.



Source: Haver Analytics.

	Latest Closing	% change from Previous Day	% change from 01-Jan-25
US Dow Jones Ind Avg	43,487.83	0.00	2.22
US NASDAQ	19,630.20	0.00	1.65
US S&P 500	5,996.66	0.00	1.96
UK FTSE 100	8,520.54	0.18	4.25
EURO STOXX 50	5,164.44	0.31	5.48
Japan NIKKEI 225	38,902.50	1.17	-2.49
Bangladesh DSEX	5,195.83	1.21	-0.43
PRC Shanghai Comp.	3,244.38	0.08	-3.20
Hong Kong, China HSI	19,925.81	1.75	-0.67
India BSE Sensex	77,073.44	0.59	-1.83
Indonesia JCI	7,170.74	0.22	1.28
Korea, Rep. of KOSPI	2,520.05	-0.14	5.02
Malaysia KLCI	1,572.34	0.36	-4.26
Pakistan KSE 100	115,844.81	0.50	-0.99
Philippines PSEi	6,349.89	-0.04	-2.74
Singapore STI	3,807.97	-0.07	0.54
Sri Lanka CSEALL	16,373.15	0.71	2.69
Taipei, China TWSE	23,266.82	0.51	1.01
Thailand SET	1,340.50	-0.01	-4.26
Viet Nam VNINDEX	1,249.55	0.04	-1.36



Sources: ADB calculations using data from CEIC Data Company and Haver Analytics.



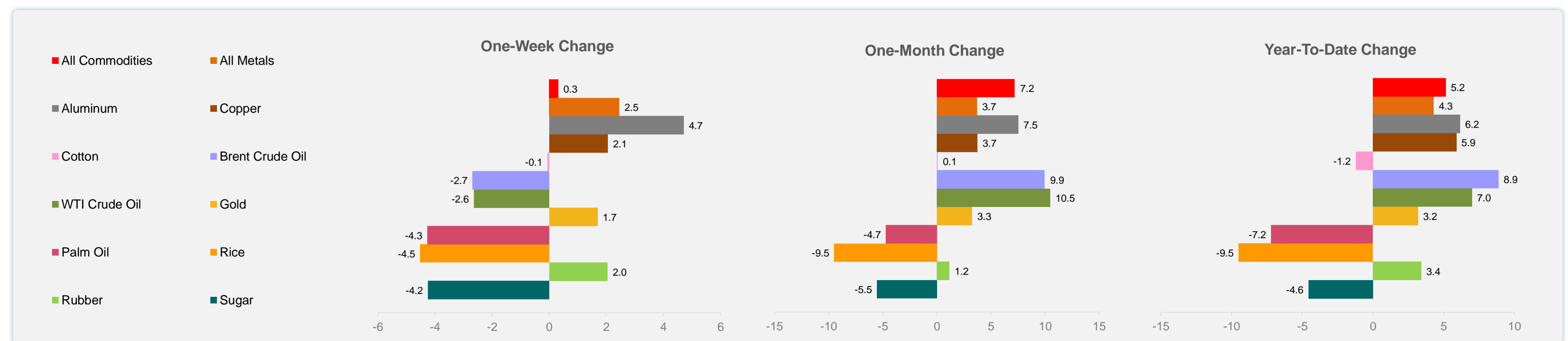
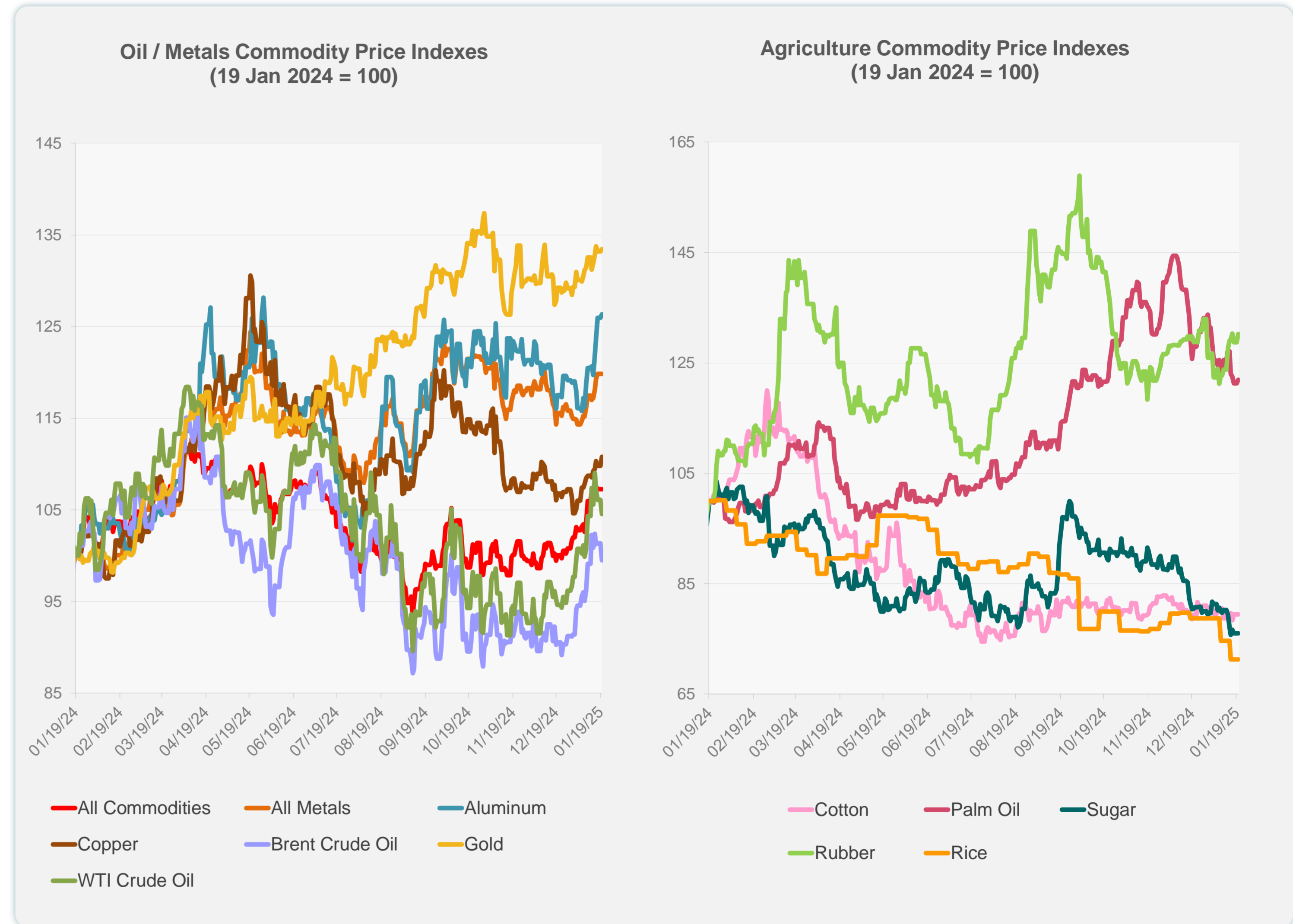
Sources: CEIC Data Company and Haver Analytics.

Daily Market Watch
COMMODITY PRICES

21 January 2025, 9:00 AM Manila

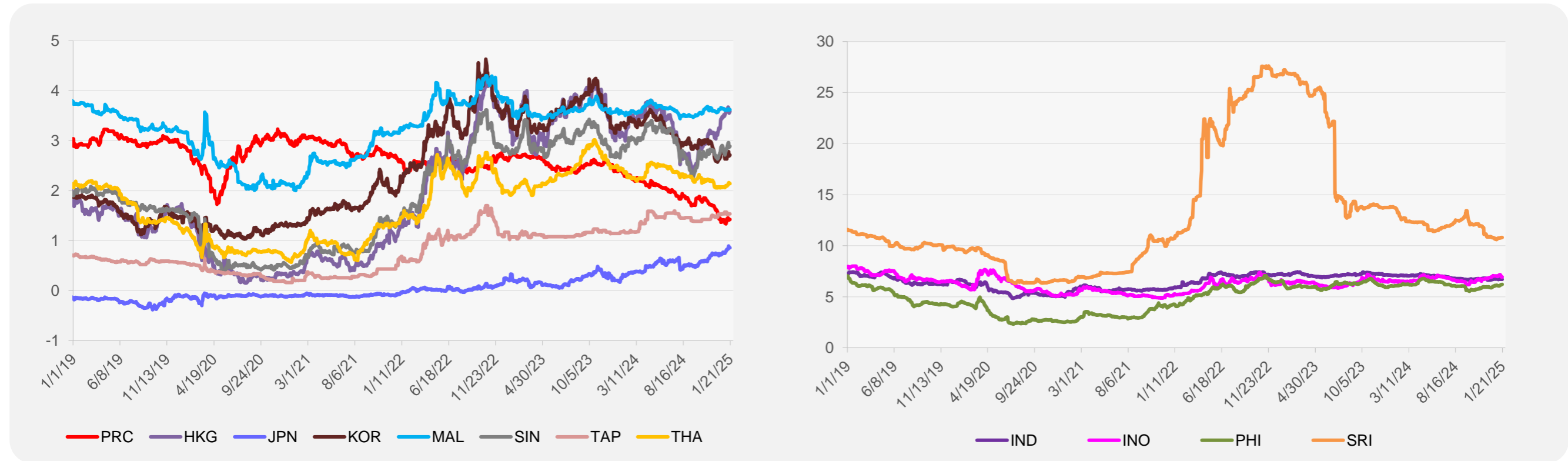
	Unit	Latest Closing	% change from Previous Day	% change from 01-Jan-25
S&P All Commodities	US\$	577.96	0.00	5.15
S&P All Metals	US\$	320.59	0.00	4.30
Aluminum	US\$/metric ton	2,682.47	0.31	6.16
Copper	US\$/metric ton	9,163.02	0.89	5.90
Cotton	US cents/lb	65.10	0.00	-1.21
Brent Crude Oil	US\$/barrel	80.69	-1.83	8.89
WTI Crude Oil	US\$/barrel	76.74	-1.46	7.00
Gold	US\$/troy oz	2,708.21	0.18	3.19
Palm Oil	US\$/metric tonne	1,020.88	0.50	-7.20
Rice ¹	US\$/metric ton	486.00	0.00	-9.50
Rubber ²	US\$/kg	244.90	1.20	3.42
Sugar	US cents/lb	17.37	0.00	-4.56

¹ Latest closing price from 15 January 2025.
² Singapore Exchange, Ribbed Smoked Sheet Rubber.

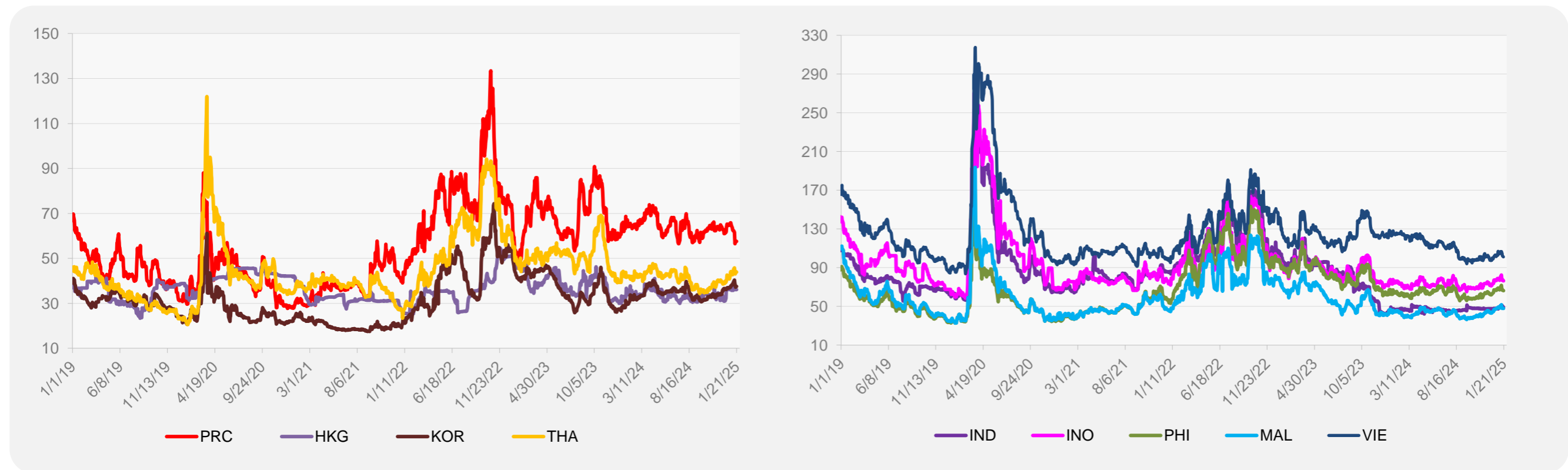


Source: ADB calculations using data from Bloomberg.

5-YEAR LOCAL CURRENCY GOVERNMENT BOND YIELDS (%)



5-YEAR CREDIT DEFAULT SWAP¹



¹ In USD and based on sovereign bonds.
Source: ADB calculations using data from Bloomberg.